



PRESIDENT'S MESSAGE



As the year comes to a close, I'm excited to share a few highlights of WOEMA's accomplishments and extend heartfelt thanks to everyone who made them possible.

This year, WOEMA reached several key milestones in advancing our mission to promote the health and safety of workers. Our legislative efforts in silicosis and lead resulted in new protections for workers, and we expanded our educational initiatives with timely webinars and resources. WOEMA also proudly welcomed Colorado and New Mexico into our community, expanding our reach and strengthening our impact across the Western states.

A major highlight was the success of WOHC 2024: *Travel, Leisure, Danger, Resources*, held at Caesars Palace in Las Vegas. This conference brought together practitioners, experts, and advocates from across the field and featured engaging sessions, powerful keynotes, and ample networking opportunities. The commitment of our volunteers, the WOHC Planning Committee, and

the entire WOEMA community made it all possible. I want to extend my sincere appreciation to WOHC 2024 Chair, Dr. Sonya Meyers, for her outstanding leadership and dedication to making the conference a resounding success. We hope all attendees found the experience meaningful and enjoyable. If you haven't already, please complete your session and conference evaluations to claim CE credit. We're looking forward to seeing you in Salt Lake City for WOHC 2025—and mark your calendar for WOHC 2026 in Hawaii!

I also want to take this opportunity to express deep gratitude to our Board Chair, Ramon Terazas, for his unwavering commitment and exceptional leadership over the past decade. As he steps down from the board, his impact and vision will continue to resonate throughout WOEMA's ongoing work, and we are immensely grateful for his years of service.

None of this would have been possible without the dedication and support of our WOEMA members committee chairs, volunteers, and staff. I want to express my deepest appreciation to each of you for your invaluable contributions. It truly takes a team to drive our mission forward, and I am proud to serve alongside each of you.

Thank you for making this a remarkable year for WOEMA, for the occupational health community, and for the workers we advocate for. Together, let's continue building on our successes to achieve even more in the year ahead.

Akbar Sharip, MD, MPH, FACOEM
President | Western Occupational and Environmental Medical Association

TOP HEADLINES

The Threats to Occupational and Environmental Medicine

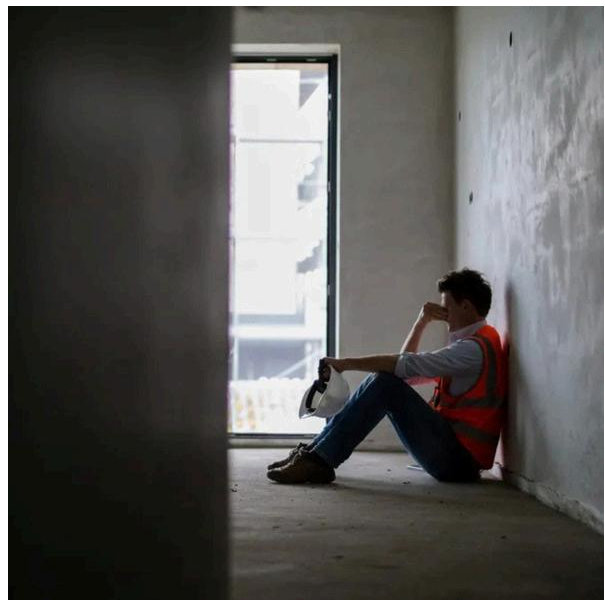


www.statnews.com

The number of practicing OEM physicians is on the decline due to a quirk in how the federal government funds medical training...

[READ MORE](#)

Contractors Shine a Light on Industry's Suicide Problem



www.constructiondive.com

The suicide death rate for construction workers was 2.4 times higher than all other industries in 2022...

[READ MORE](#)

FEATURED ARTICLES

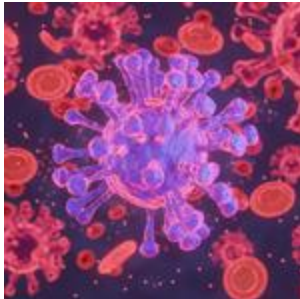
New California Law Requires Naloxone in Workplace First Aid Kits



www.safetyandhealthmagazine.com

Naloxone hydrochloride or another Food and Drug Administration-approved opioid-reversal medication must be included in all workplace first aid kits in California no later than Dec. 1, 2028...

New Recommendations for Workplace Chemical Risk Assessment Published



www.news-medical.net

The Permanent Senate Commission for the Investigation of Health Hazards of Chemical Compounds in the Work Area of the DFG has now published its latest research-based recommendations on the risk...

OSHA To Propose Violence Prevention Standard for Health Care Industry



newenglandbizlawupdate.com

Health care workers, long recognized as facing unique occupational hazards, may soon see new protections as OSHA prepares to address one of their most pressing concerns: workplace violence...

Exploring the Relationship Between Occupational Stress, Physical Activity and Sedentary Behavior Using the Job-Demand-Control Model



www.frontiersin.org

The study highlights the impact of sedentary behavior on occupational stress, assessed using Karasek's Job-Demand-Control Model. Despite being less studied, sedentary behavior is a relevant contributor to...

California Workers Who Cut Countertops Are Dying of Silicosis



www.latimes.com

The booming popularity of countertops made of engineered stone has driven a new epidemic of silicosis, an incurable lung disease, researchers have found...

Lawmakers Take 'Creative' Approach To Enforcing Heat Safety Rules for Farmworkers



www.latimes.com

A bill on Gov. Gavin Newsom's desk aims to add teeth to the state's outdoor heat safety standards by making it easier for farmworkers to make a workers' compensation claim against an employer for heat...

Paramedics' Excess Cancers Linked With Workplace Exposures



www.whsc.on.ca

While a significant amount of attention has been paid to cancers faced by firefighters, Canadian research suggests similar elevated cancers for paramedics. This may be related to shared exposures faced by...

INDUSTRY TRENDS

Proactive Approach to Substance Misuse in the Workplace

U.S. Labor Department Introduces Severe Injury Report Dashboard



uofuhealth.utah.edu

Substance misuse and addiction in the workplace is a growing problem across the U.S. Health care workers are not immune, with an estimate of more than 1 in 100 workers diverting medications...

[READ MORE](#)



ohsonline.com

The U.S. Department of Labor's OSHA has launched a Severe Injury Report dashboard, offering an interactive way to access and analyze data on workplace injuries in federal OSHA-covered states since 2015...

[READ MORE](#)

Western Occupational & Environmental Medical Association



[Advertise](#) | [Privacy Policy](#)



Association Revenue Partners
A JSJD Media Company
500 N. Central Expy, Suite 231, Plano, TX 75074

*This publication does not represent the thoughts or opinions of JSJD Media or advertisers and is intended as an aggregation of published news content only